



Corporate Flow



Illustration



Image Editing



Automation



Web



Text Effects

Canvas Tips and Techniques



Copyright © 1995-2005
ACD Systems of America, Inc.

Protected by the copyright laws
of United States and Canada
and by international treaties.



The "X" Factor Type Effects

Okay, you've seen the "X Files" TV show, you've seen the cool green glow effect behind the type. You know it can be done, but every time you pick up an image editing book to learn how to do it, you see all the alpha channel operations and all the steps and you say, "Maybe later..."

It's easy in Canvas. We looked at several instructional books and distilled an average of seven laborious steps into four (yes, only FOUR) easy ones. Credit Sprite technology for these simple steps. Check it out:

Step 1

Draw a black rectangle for the background. Then Type an "X" (or whatever text) in a large, heavy typeface. Here we used 72 pt size. Make a copy of the X usind Duplicate Tool and set it aside.



Step 2

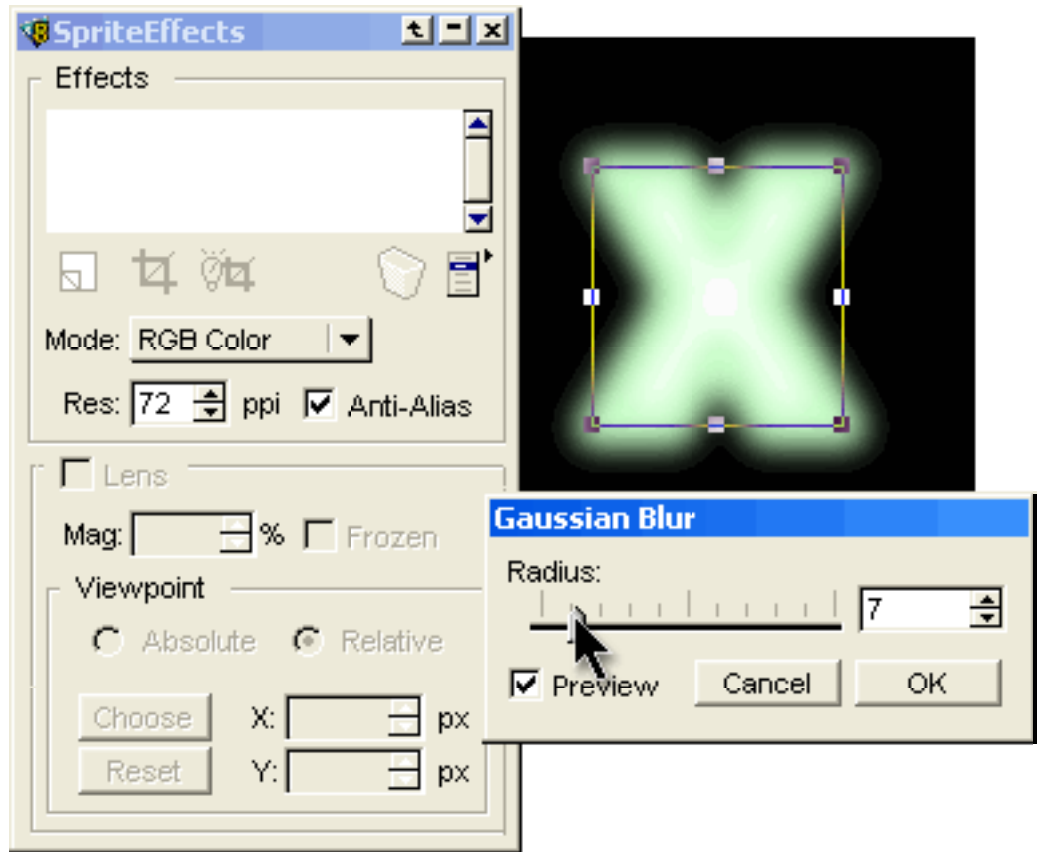
Take one of the X's and apply a thick stroke (we used a 15 pt pen weight). Then apply a white fill to the inside and a bright green pen ink to the stroke.



Step 3

Next, choose Object>SpriteEffects>Add Effect>Gaussian Blur.

Use a setting that creates a blur similar to the one shown (at 72 ppi, a setting of about 7 is plenty). Place this on the black background.



Step 4

Take the original plain black "X," bring it to the front, and center it on the green glow.

That's it !

Another variation to the same effect is described on the steps to follow.



The "X" Factor Type Effects (Continued)

Variations

Here's a variation of the "X Factor" tip, but this one is more like a "negative space glow" and is a little simpler. We took the four-step image editing procedure and knocked it down to just one using the new Shadow effect in Canvas.

Type some text (again, a big, heavy typeface helps) and apply the same color as the background that it rests on. Our background here is white, so we colored the text white.

Now choose Effects>Shadow, and make sure to use the "Image" setting. Shown here are some sample settings that you can try for this dialog box.

Click OK, and you're done!

