



Corporate Flow



Illustration



Image Editing



Automation



Web



Text Effects

Canvas Tips and Techniques



Copyright © 1995-2005
ACD Systems of America, Inc.

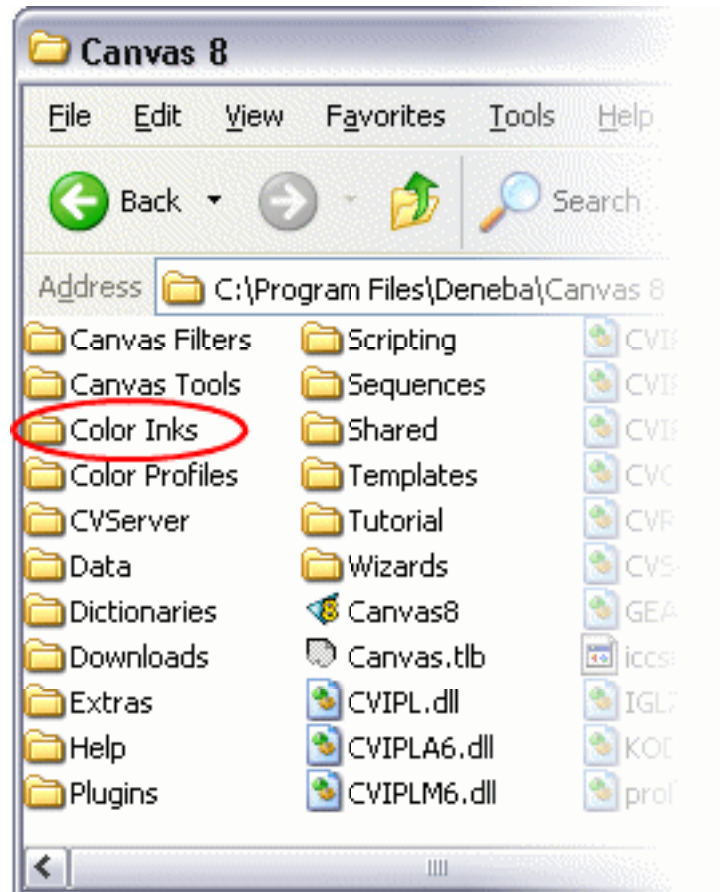
Protected by the copyright laws
of United States and Canada
and by international treaties.



Loading the Web Safe Color Palette

If complete cross-platform and browser compatibility is a concern for your Web site, you might want to design your logos and Web graphics using Web safe colors.

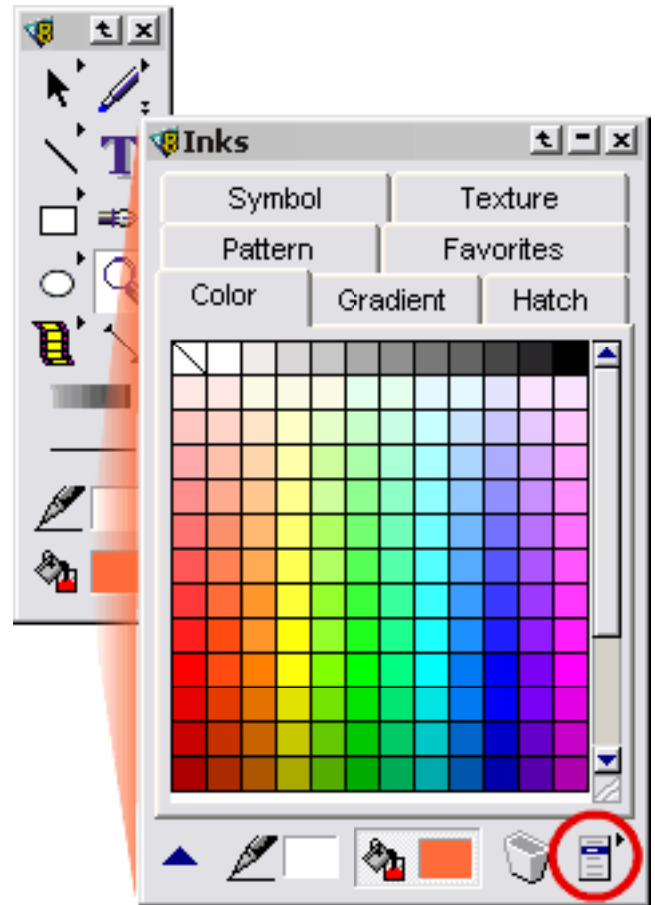
Canvas ships with a browser safe color palette located in the color inks folder that is installed in your system.



Loading the Web Safe Color Palette (Continued)

Loading the Web Safe Color Palette

It's easy to load this palette. Simply open the Inks palette. Click on the menu icon and choose RGB_websafe_216.PAL from the pop-up menu.



To effectively use these colors, apply them in solid blocks of color. If you alter them or start creating gradients with them, you will generate non-browser safe colors that defeat the purpose.

Keep in mind it is not necessary to use this palette of color if you are reasonably sure that your Web site visitors have decent monitor display capabilities and if very minor color shifts are not a concern.

In any case, you should use RGB colors because they are more brilliant and will look best on screen.