



Corporate Flow



Illustration



Image Editing



Automation



Web



Text Effects

Canvas Tips and Techniques



**Deneba
Creative Department**

Copyright © 2003
Deneba Systems Inc.
All Right Reserved Worldwide



Stipple Effect

Here's a quick way to add a stipple effect to vector illustrations or images using Canvas powerful and easy SpriteEffects. Adding effects such as this takes quite a few steps in other applications, but with SpriteEffects, Canvas makes it simple and quick.

Step 1

In a new document, copy and paste or Place your illustration. In this example, I selected a colorful clip art illustration from the Canvas collection. This effect also works great on text and images.

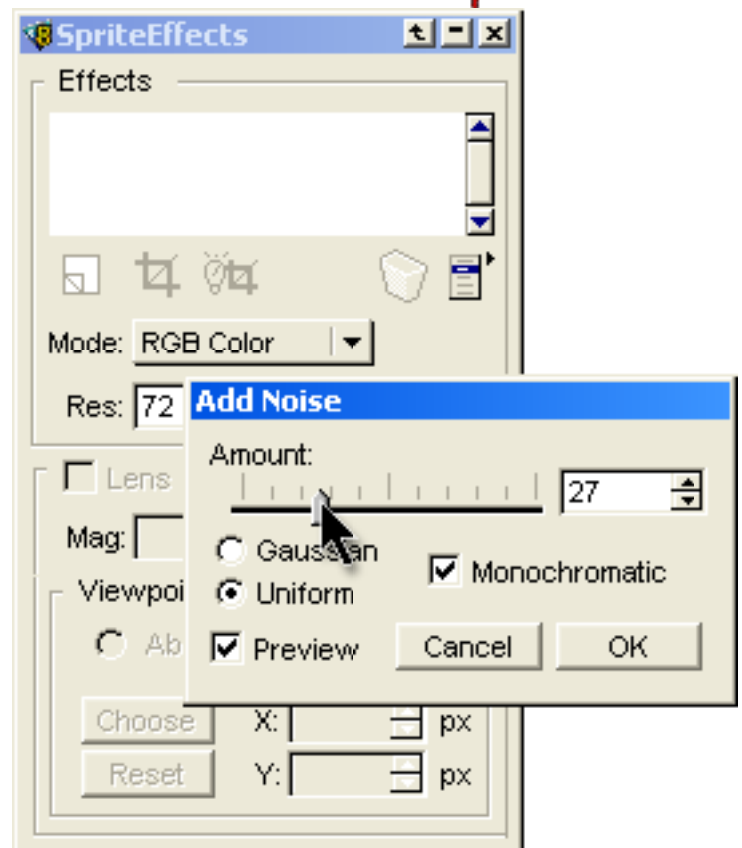
To use the same illustration, download the [Brazil illustration](#) from DIGS.



Step 2

Make sure the illustration is Grouped first so the effect can be added in one step. With the group selected, choose the SpriteEffects palette from the object menu (Object>SpriteEffects>Show Palette). Double-click on the document icon at the lower left of the Effects window to add a new effect. Next select Noise>Add Noise...

For this example, I chose an amount of 27, Uniform and Monochromatic settings. Play around with these options for the look you like. Don't forget to keep the Preview box checked in order to preview the results before clicking OK.



Stipple Effect (Continued)

The result of your illustration is a spotted or stipple effect. Be sure to select the Anti-Alias box in the SpriteEffects palette to smooth the edges of the illustration. You can also add additional effects to your illustration using SpriteEffects.

Changing your mind is not a problem. Simply double-click the Add Noise effect in the SpriteEffects window and you can adjust the noise settings. You can also remove the effect altogether by dragging the effect to the trash in the lower right of the palette. The illustration always remains a vector object.




A Stipple effect is created simply by applying Noise as a SpriteEffect.

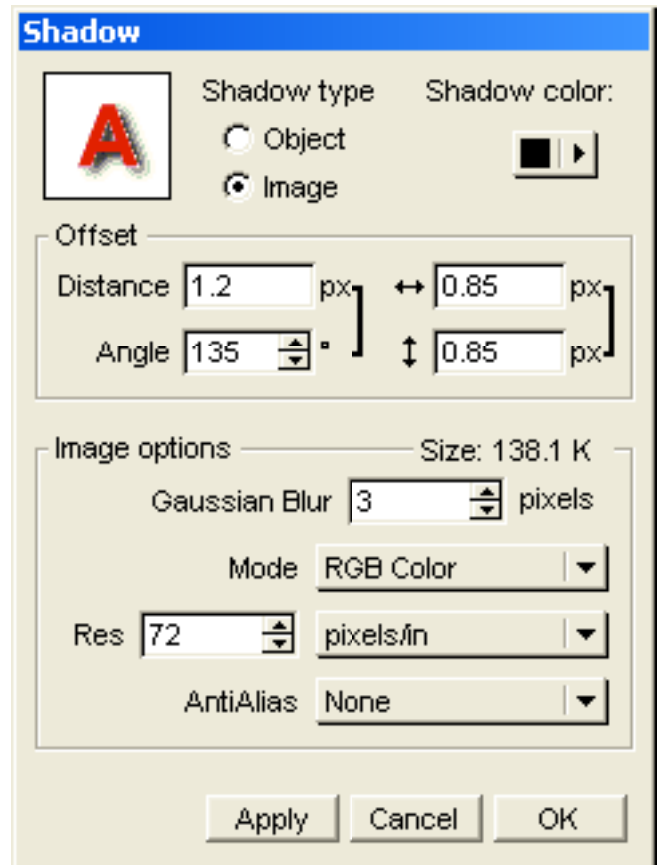
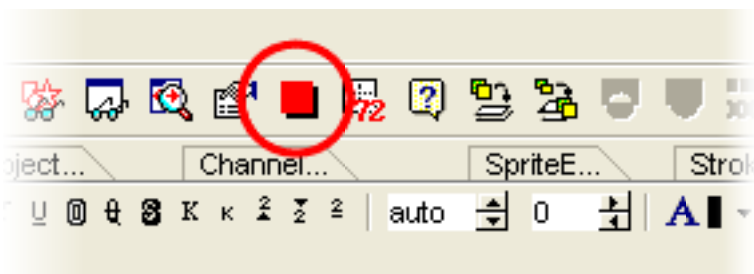
Step 3

To complete the illustration, try adding a soft shadow.

Here, I selected the Automatic Shadow from the Effects menu. I chose an Image shadow type and black for the color. In the Image Options section of the palette, I chose 3 for the amount of blur. The Offset section is for setting the exact placement of the shadow.

If the shadow is too dark, try adjusting the Opacity slider on the Toolbox.

 **Tip:** Your favorite and most often used tools, effects, inks etc. can be added to your customized tool bar for quick and easy access. Then adding a drop shadow, for example, is just a click away! You can customize your toolbar from the File menu (File>Customize...).



Stipple Effect (Continued)

The completed illustration with the drop shadow.



Step 4

Another method:

Depth can be increased in the final illustration by selecting individual objects and applying the noise and drop shadows separately. In the example on the right, the letters were grouped then Noise and a shadow were added to create a layered appearance. The same was done for the rest of the illustration.



Different amounts of noise applied per object can also add interest. For example, a finer setting can be used on the background to create a feeling of distance. The foreground may need a rougher setting. Experiment for the best results.

