



Corporate Flow



Illustration



Image Editing



Automation



Web



Text Effects

Canvas Tips and Techniques



**Deneba
Creative Department**

Copyright © 2003
Deneba Systems Inc.
All Right Reserved Worldwide



Adding Scan Lines to your Images

You've probably seen this linear effect on a lot of print, TV and web designs lately. Now use Canvas to make boring images more interesting by adding this linear effect to your images in a couple of steps.

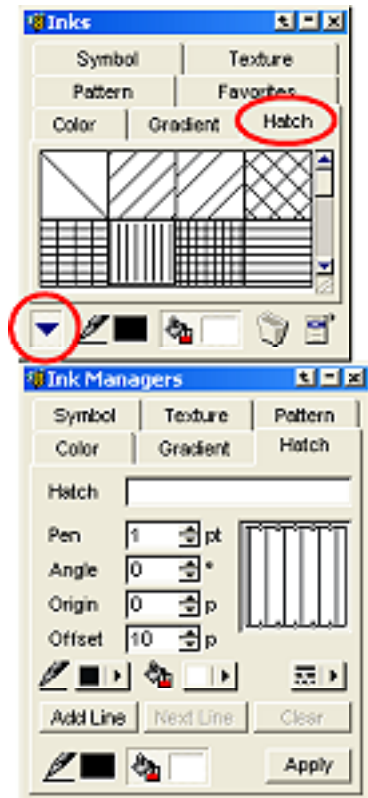
Step 1

Select the image (this will also work on vector objects) and Place or Acquire it into Canvas. Here, I used an image off of a commercial photo CD.



Step 2

Open the Inks palette and tear it away. Select the Hatch tab and click the bottom left triangle to access the manager.



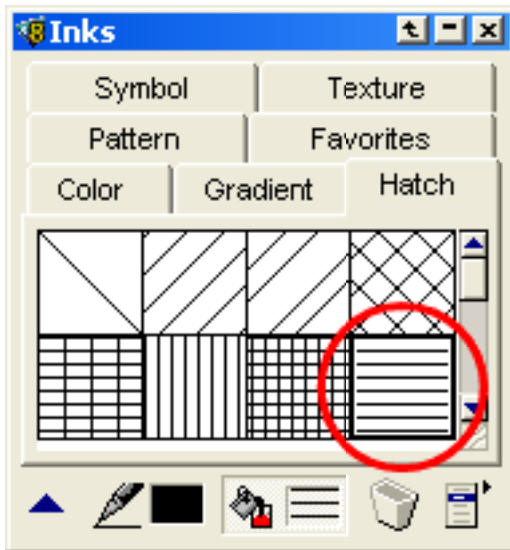
Step 3

Draw a rectangle over the area you'd like to apply the lines to. Next remove the fill from the rectangle. You can remove the stroke as well, but I wait till after completing the effect so I can see boundary of the rectangle.



Step 4

Just select the Hatch Ink you'd like to use. I used the horizontal line Hatch (Hatch #5) on the second row for this example. But experiment with any of the default Hatches provided or create your own. You can also edit the Hatch Ink (pen color) by changing your options in the manager.



To finish the effect, select the transparency slider from the tool box and move the slider until you see the results you're looking for. (I set the opacity to 20% and the pen color to white for this example) You're done!

More examples using different Hatch lines and opacity levels.

Same settings as above.



For the wine glass image I used Hatch #5 (see example of edited hatch above), pen was set to purple, Hatch offset to 6 and opacity: to 35%.



The Concentric Circle Tool (found in the Tool box) is another way to add the linear effect. For this image the pen was set to a tan color and the opacity to 20%.



HOME

HOME